

DISABLED ACCESS HUNTING



Photo: Rich Fabend (Handihelp.net)

ON FORT DRUM

General Information

- There are special hunting opportunities for persons possessing a NYS Non-Ambulatory Hunter Permit, persons with severe permanent disabilities eligible for a NYS Parking Permit or License Plate; or persons with a life-threatening illness participating through a non-profit organization. Contact Fort Drum's Natural Resources Branch to register.



- Training Area 5E (which is otherwise off-limits to recreation) is open to allow hunting with a shotgun and/or archery/crossbow at 3 designated sites (#5-7) for game species during their respective seasons.

- Cantonment Hunting Area #44 (formerly Training Area 6C) is open for DoD ID holders for archery/crossbow at 4 designated sites (#1-4).

- There is an accessible waterfowl blind in the Mattoon Creek Marsh in Training Area 17B.

- Hunters eligible for accessible accommodations may hunt from an ATV on any trail/road not designated as a recreational road in Training Areas 6A, 7E, 7F, 7G, and 17D.

- **See Fort Drum Regulation 420-3 paragraph 11 for more information.**

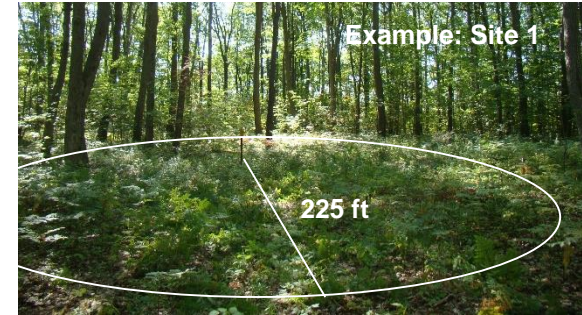
Check-in & Access

- All recreationists must get a Fort Drum Recreation Permit from <https://FortDrum.iSportsman.net>. Hunters wanting to access designated areas in Training Areas 5E and Cantonment Area 44 can check-in and check-out through the iSportsman system.

- Persons assisting can also hunt in these areas, but must also possess a NYSDEC hunting license and Fort Drum Recreation Permit whether they are actually hunting or not.

General Rules for Hunting Sites

- To allow control of access in these otherwise restricted areas while providing some flexibility for hunting, hunters must hunt within the designated radius of the center point at each site. The designated radius is listed under "Specifications" for each site description. The center point is posted with a sign (*below*) at each site.



Site #	Distance (feet) from Center Point
1	225
2	225
3	225
4	225
5	300
6	300
7	300



- Hunting may be conducted from vehicles, portable stands (tree stand or tripod), or portable blinds on the ground.

- Directions for each site are provided in the site description in this brochure. Signs are posted on the main road with a directional arrow to the sites.

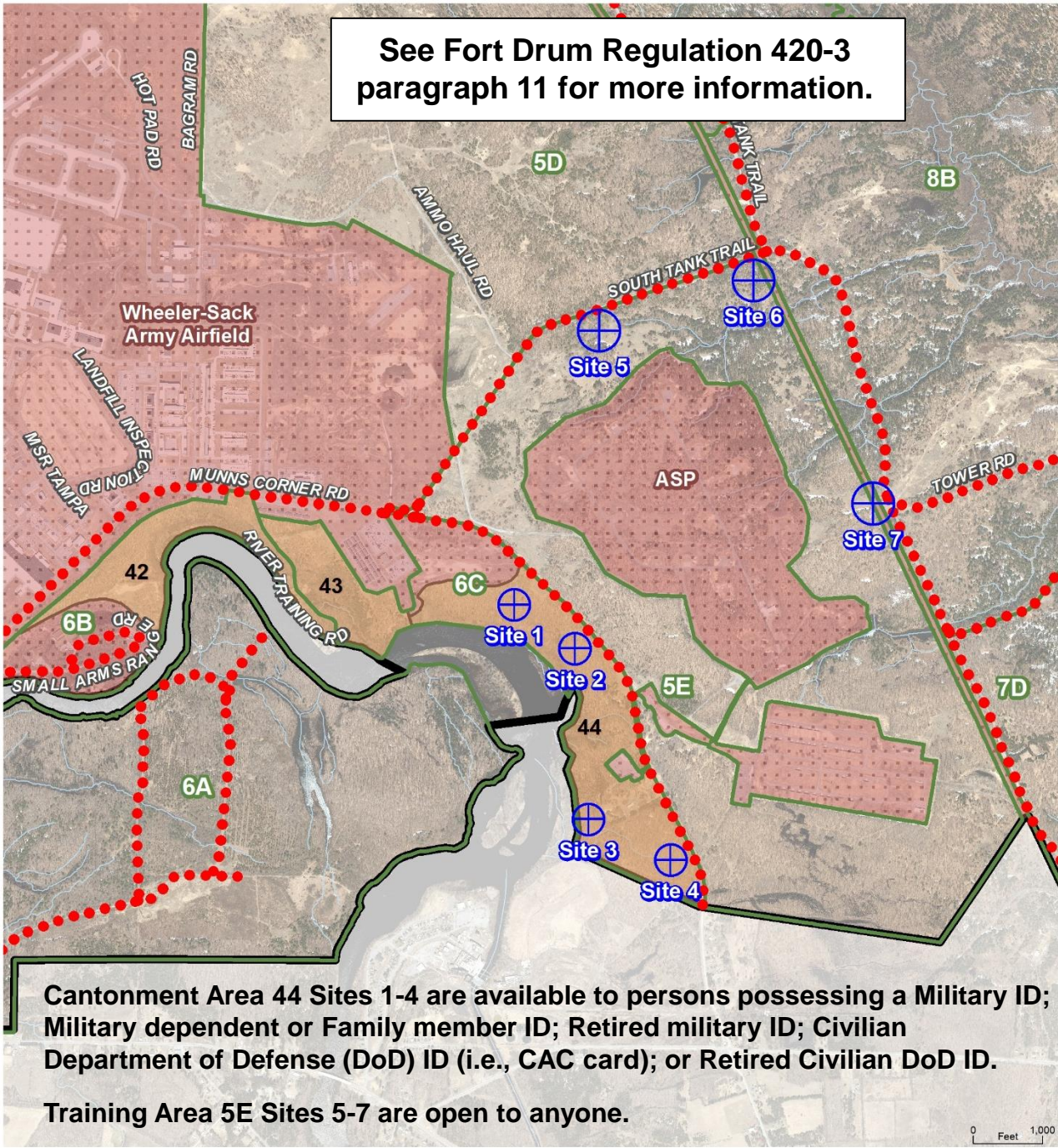


Fort Drum Natural Resources Branch
Environmental Division – Public Works

315-772-9303 / 315-772-9636

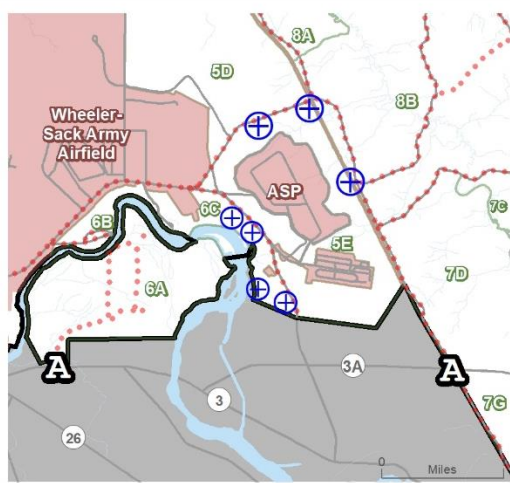
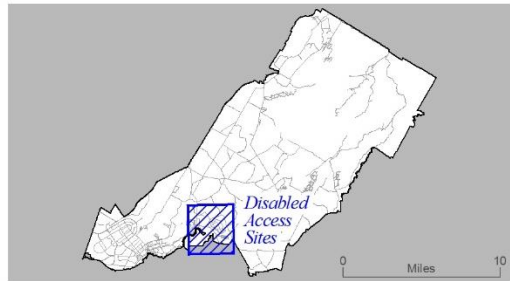
FortDrum.iSportsman.net

See Fort Drum Regulation 420-3 paragraph 11 for more information.



**DISABLED ACCESS SITES
RECREATIONAL USE ONLY
FORT DRUM MILITARY INSTALLATION**

- DISABLED ACCESS HUNTING SITE
- RECREATION ACCESS POINT
- RECREATION ROAD
- STREAM/CREEK
- CANTONMENT HUNTING AREA (SEE FORT DRUM REGULATION 420-3 FOR MORE INFORMATION.)
- PERMANENTLY RESTRICTED TO ALL RECREATIONAL ACTIVITIES.
- TRAINING AREA AND
- INSTALLATION BOUNDARY



Cantonment Area 44 Sites 1-4 are available to persons possessing a Military ID; Military dependent or Family member ID; Retired military ID; Civilian Department of Defense (DoD) ID (i.e., CAC card); or Retired Civilian DoD ID.

Training Area 5E Sites 5-7 are open to anyone.

0 Feet 1,000



REPRODUCE IN COLOR ONLY.

SITE 1

Location

Site 1 is located in Cantonment Hunting Area 44 off of Munns Corner Road past all the buildings and just prior to a lone gravel parking lot along a wooded edge.

Lat-Long: 44°03'11.221"N 75°40'41.686"W

UTM: E 445670 N 4877995

Directions

Through the WSAAF gate onto Munns Corner Road. Go 0.9 miles from the intersection of Munns Corner Road and Bagram Road. Take a right onto a sandy road following the sign and go 0.1 mi and turn left following a second sign to the center point ahead in a clearing.

Description

A wooded area with a very open understory. The stand is composed mainly of red oak and a few white pine. Sight distance is approximately 100 yards.

Specifications

Hunting is allowed within **250 feet** of the center point. Archery and crossbows for big game and turkey hunting is allowed—no firearms are allowed on Site 1.



Site 1



Site 2

SITE 2

Location

Site 2 is located in Cantonment Hunting Area 44 off of Munns Corner Road past all the buildings near the airfield but before the buildings of the ammunition supply point.

Lat-Long: 44°03'11.221"N 75°40'29.622"W

UTM: E 445938 N 4877802

Directions

Through the WSAAF gate onto Munns Corner Road. Go 1.2 miles from the intersection of Munns Corner Road and Bagram Road. Just before the green "Ammunition Supply Point" sign, take a right onto a logging road and go 0.1 mi to the center point straight ahead.

Description

A wooded area with a semi-open understory. The stand is composed mainly of red oak and white pine. Sight distance is approximately 75 yards.

Specifications

Hunting is allowed within **250 feet** of the center point. Archery and crossbows for big game and turkey hunting is allowed—no firearms are allowed on Site 2.

SITE 3

Location

Site 3 is located in Cantonment Hunting Area 44 between the LRC Ammunition Residue Turn-in-Point building, boundary fence and the Black River.

Lat-Long: 44°02'40.794"N 75°40'26.695"W

UTM: E 445997 N 4877053

Directions

Through the WSAAF gate onto Munns Corner Road. Go 1.4 miles from the intersection of Munns Corner Road and Bagram Road to the "Y" in the road. Go right for 0.2 miles and turn at the "LRC Ammunition Residue Turn-in-Point" sign. Proceed 0.1 mile past the compound and follow the sign for another 0.1 mile to the center point to the left.

Description

A wooded area that was burned ca. 2007. Mainly composed of red maple, red pine, and red oak. The understory is denser with downed trees. A perimeter fence and the Black River are nearby. Sight distance is approximately 50-100 yards.

Specifications

Hunting is allowed within **250 feet** of the center point. Archery and crossbows for big game and turkey hunting is allowed—no firearms are allowed on Site 2.



Site 3

SITE 4

Location

Site 4 is located in Cantonment Hunting Area 44 toward the end of Munns Corner Road where it is blocked by barricades.

Lat-Long: 44°02'35.113"N 75°40'10.398"W

UTM: E 446358 N 4876875

Directions

Through the WSAAF gate onto Munns Corner Road. Go 1.4 miles from the intersection of Munns Corner Road and Bagram Road to the "Y" in the road. Go right for 0.4 miles and turn right onto a logging road prior to the "Road Closed in 500 Feet" sign. Proceed 0.1 mile to the center point straight ahead.

Description

A heavily wooded area dominated by gray birch, red maple, and quaking aspen. There are also red oak and scotch pine scattered throughout the hunting area. Various trails intersect in the area and the perimeter fence is to the south. Sight distance is limited to approximately 50 yards.

Specifications

Hunting is allowed within **250 feet** of the center point. Archery and crossbows for big game and turkey hunting is allowed—no firearms are allowed on Site 3.



Site 4



Site 5

SITE 5

Location

Site 5 is located in TA 5E off of the South Tank Trail west of Hubbard Crossing.

Lat-Long: 44°03'50.342"N 75°40'25.392"W

UTM: E 446043 N 4879199

Directions

From the intersection of Route 3A and South Tank Trail Extension in Training Area 7D, go 2.6 north on the South Tank Trail Extension to the railroad tracks at Hubbard Crossing. Continue 0.5 on the South Tank Trail past the railroad tracks and turn left onto a sandy road. Go a little over 0.1 miles to the center point on the left.

Description

An open field dominated by red oak, white pine, and red maple. Red pine, scotch pine, gray birch, and quaking aspen are also scattered throughout the wooded area around the field. Sight distance is approximately 100-200 yards.

Specifications

Hunting is allowed within **300 feet** of the center point. Archery, crossbows, and shotguns for big game and turkey hunting are allowed.

SITE 6

Location

Site 6 is located in TA 5E off of the South Tank Trail just west of Hubbard Crossing at the railroad tracks.

Lat-Long: 44°03'57.654"N 75°39'55.012"W

UTM: E 446721 N 4879419

Directions

From the intersection of Route 3A and South Tank Trail Extension in Training Area 7D, go 2.6 north on the South Tank Trail Extension to the railroad tracks at Hubbard Crossing. Go across the railroad tracks and take an immediate left onto a logging road. Follow the signs approximately 0.2 mi staying on level ground (don't go down slope) and to the center point.

Description

This area has many small openings with small patches of wooded areas. Scotch pine and red oak dominate the stand and are mixed with white pine, red pine, gray birch, and red maple. Sight distance is approximately 50-100 yards.

Specifications

Hunting is allowed within **300 feet** of the center point. Archery, crossbows, and shotguns for big game and turkey hunting are allowed.



Site 6

SITE 7

Location

Site 7 is located in TA 5E at the intersection of Tower Road and the South Tank Trail.

Lat-Long: 44°03'26.057"N 75°39'31.061"W

UTM: E 447246 N 4878440

Directions

From the intersection of Route 3A and South Tank Trail Extension in Training Area 7D, go 1.7 north on the South Tank Trail Extension. The parking area is near a concrete structure next to the railroad tracks at the intersection with Tower Road. The site is across the railroad tracks and is restricted to foot traffic.

Description

A small open field surrounded mainly by quaking aspen, red oak, and red maple. Black cherry, scotch pine, white pine, and gray birch are also scattered throughout the area. The wooded area surrounding the field has a very open understory.

Specifications

Hunting is allowed within **300 feet** of the center point. Archery, crossbows, and shotguns for big game and turkey hunting are allowed.



Site 7

Accessible Waterfowl Blind in Training Area 17B

An approximately 85 acre waterfowl hunting area and refuge has been established in Training Area 17B in Matoon Creek Marsh off of Matoon Creek Road. This area is accessed from a parking area off of Matoon Creek Road and down an accessible road on the peninsula leading into the marsh.



Two accessible blinds are available. Hunting in this area is available **ONLY** to hunters drawn in a lottery system. Preference will be given to hunters that have accessibility needs.

See Fort Drum Regulation 420-3 paragraph 10 *Special Waterfowl Hunting Areas* and the web site (<https://fortdrum.isportsman.net/waterfowlhunting.aspx>) for more information.



General Regulations for Disabled Access Opportunities

- Hunting from vehicles must be in accordance with the New York State regulations.
- Hunters eligible for accessible accommodations may hunt from an ATV or POV parked in a sub-training area open to recreational use for that day. Vehicles that are hunted from must be parked off designated recreational roads (see the Fort Drum Recreational Use Map) adjacent to the subtraining area open to recreational use for that day.
- Vehicles must be parked in such a manner to not obstruct traffic, but within 50 feet and visible from the road.
- The engine of the vehicle must be turned off while hunting and before the weapon is uncased.
- ATVs must be transported into the Training Area by vehicle or trailer. ATVs must be used in accordance with Fort Drum Regulation 420-3 paragraphs 6(j) and 6(k).
- The transport of weapons must be in accordance with Fort Drum Regulation 420-3 paragraph 7(d); weapons on ATVs must be in a scabbard.
- Archery hunters must possess a valid New York State Modified Archer Permit or Modified Crossbow Permit to use modified bows per state regulations.

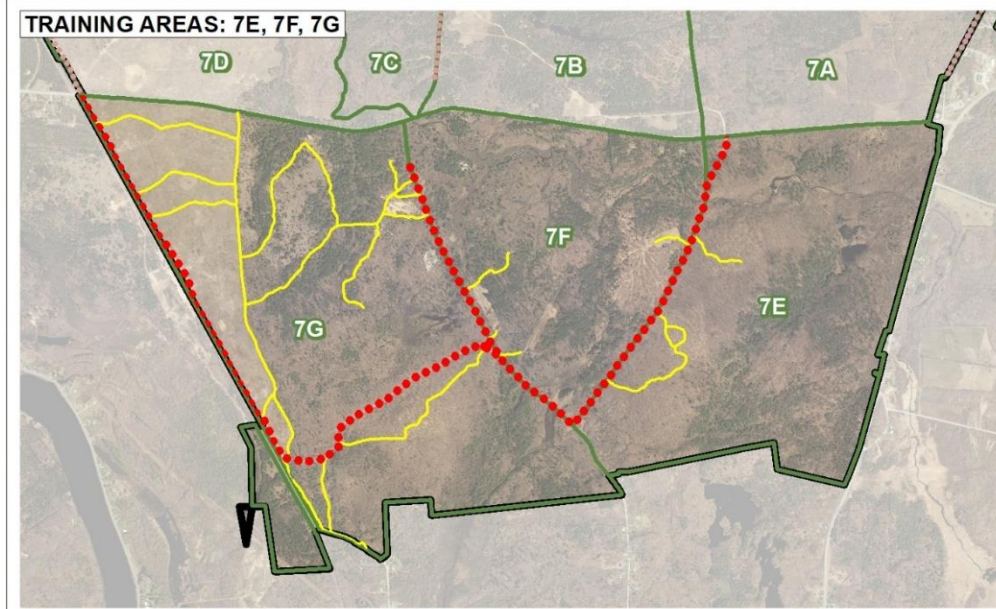
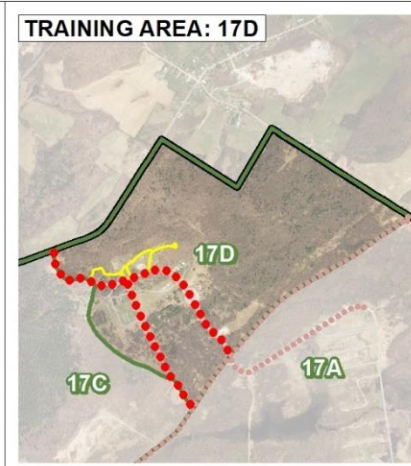
ATV Trails for Disabled Access Hunting

- Hunters eligible for accessible accommodations may hunt from an ATV on any trail/road not designated as a recreational road in Training Areas 6A, 7E, 7F, 7G, and 17D open to recreational use for that day.

- ATVs must be transported into the Training Area by vehicle or trailer which must be parked off designated recreational roads (reference Fort Drum Recreational Use Map) in such a manner as to not obstruct traffic and only next to or within the sub-training area open to recreational use for that day.

- ATVs must be used in accordance with Fort Drum Regulation 420-3 paragraphs 6(j) and 6(k). The engine of the vehicle must be turned off while hunting, and before the weapon is uncased.

- The transport of weapons must be in accordance with Fort Drum Regulation 420-3 paragraph 7(d); weapons on ATVs must be in scabbards.



**APPENDIX G.
ATV TRAILS FOR
DISABLED ACCESS HUNTING**

SEE FORT DRUM REGULATION 420-3 PARAGRAPH 11 FOR MORE INFORMATION

- INSTALLATION BOUNDARY
- TRAINING AREA AND ID
- RECREATION ROAD
- TRAIL FOR DISABLED ACCESS HUNTING

Training Areas with Trails/Rec Roads for ATV and Snowmobile Use

0 Miles 10

0 Miles 1

0 Miles 1

0 Feet 1,000

REPRODUCE IN COLOR ONLY.

PREPARED BY PW-ENV-016 315-772-1602 FORT DRUM, NEW YORK, MAY 2018



For a completely accessible outdoor experience in summer, visit John Dillon Park in Tupper Lake, NY www.paulsmiths.edu/johndillonpark/



For more information about accessible recreation in NYS including fishing and camping, see the NYSDEC web page at www.dec.ny.gov/outdoor/34035.html

